

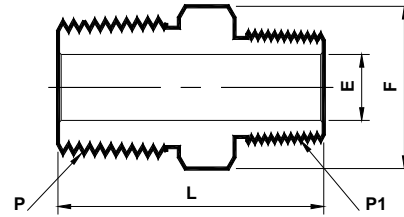
2.13 Pipe Fitting Part 1

1/16"-2" NPT, 1/8"-1/2" BSP/ISO, SAE/MS

01. Hex Reducing Nipple

Material - **SS 304 | SS 316**

NPT (M) x NPT (M)
(N - PHRN - N)



Sr. No.	NPT ② Male Pipe Size P	NPT ② Male Pipe Size P1	Ref. Part No.		L	ØE ①	Hex F
			SS 304	SS 316			
			PHRN4	PHRN6	Dimensions in Inches		
1	(1/4 x 18) x (1/8 x 27)		4PHRN2Nx4	4PHRN2Nx6	1.22	0.19	9/16
2	(3/8 x 18) x (1/4 x 18)		6PHRN4Nx4	6PHRN4Nx6	1.43	0.28	11/16
3	(1/2 x 14) x (1/4 x 18)		8PHRN4Nx4	8PHRN4Nx6	1.65	0.28	7/8
4	(1/2 x 14) x (3/8 x 18)		8PHRN6Nx4	8PHRN6Nx6	1.65	0.38	7/8
5	(3/4 x 14) x (1/2 x 14)		12PHRN8Nx4	12PHRN8Nx6	1.84	0.47	1.1/16
6	(1 x 11.5) x (1/2 x 14)		16PHRN8Nx4	16PHRN8Nx6	2.13	0.47	1.3/8
7	(1 x 11.5) x (3/4 x 14)		16PHRN12Nx4	16PHRN12Nx6	2.13	0.62	1.3/8

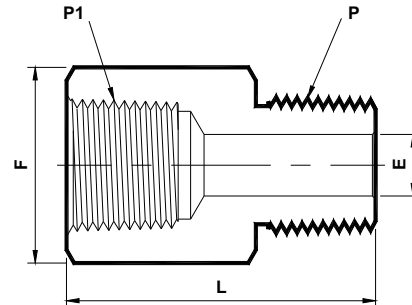
NOTE : ① The 'E' Dimension is the minimum opening.

② NPT thread as per ANSI B 1.20.1.

02. Adapter

Material - **SS 304 | SS 316**

NPT (M) x NPT (F)
(N - PA)



Sr. No.	NPT ② Male Pipe Size P	NPT ② Female Pipe Size P1	Ref. Part No.		L	ØE ①	Hex F
			SS 304	SS 316			
			NPA4	NPA6	Dimensions in Inches		
1	(1/8 x 27) x (1/8 x 27)		2NPAx4	2NPAx6	1.10	0.19	9/16
2	(1/4 x 18) x (1/4 x 18)		4NPAx4	4NPAx6	1.40	0.28	3/4
3	(3/8 x 18) x (3/8 x 18)		6NPAx4	6NPAx6	1.51	0.38	7/8
4	(1/2 x 14) x (1/2 x 14)		8NPAx4	8NPAx6	1.94	0.47	1.1/16
5	(3/4 x 14) x (3/4 x 14)		12NPAx4	12NPAx6	2.02	0.62	1.1/4
6	(1 x 11.5) x (1 x 11.5)		16NPAx4	16NPAx6	2.28	0.88	1.5/8

NOTE : ① The 'E' Dimension is the minimum opening.

② NPT thread as per ANSI B 1.20.1.

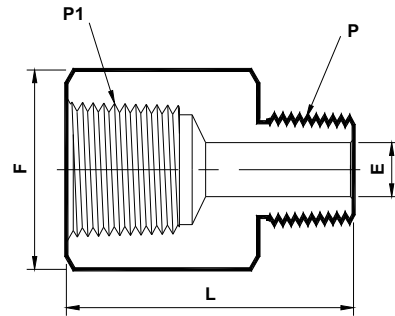
2.13 Pipe Fitting Part 1

1/16"-2" NPT, 1/8"-1/2" BSP/ISO, SAE/MS

03. Reducing Adapter

Material - **SS 304 | SS 316**

NPT (F) x NPT (M)
(N - PRA - N)



Sr. No.	NPT ② Female Pipe Size P1	NPT ② Male Pipe Size P	Ref. Part No.		L	ØE ①	Hex F
			SS 304	SS 316			
			PRA4	PRA6	Dimensions in Inches		
1	(1/4 x 18) x (1/8 x 27)		4PRA2Nx4	4PRA2Nx6	1.26	0.19	3/4
2	(3/8 x 18) x (1/4 x 18)		6PRA4Nx4	6PRA4Nx6	1.50	0.28	7/8
3	(1/2 x 14) x (1/4 x 18)		8PRA4Nx4	8PRA4Nx6	1.76	0.28	1.1/16
4	(1/2 x 14) x (3/8 x 18)		8PRA6Nx4	8PRA6Nx6	1.75	0.38	1.1/16
5	(3/4 x 14) x (1/2 x 14)		12PRA8Nx4	12PRA8Nx6	2.02	0.47	1.1/4
6	(1 x 11.5) x (1/2 x 14)		16PRA8Nx4	16PRA8Nx6	2.16	0.47	1.5/8
7	(1 x 11.5) x (3/4 x 14)		16PRA12Nx4	16PRA12Nx6	2.17	0.62	1.5/8

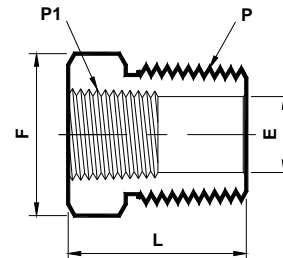
NOTE : ① The 'E' Dimension is the minimum opening.

② NPT thread as per ANSI B 1.20.1.

04. Reducing Bushing

Material - **SS 304 | SS 316**

NPT (M) x NPT (F)
(N - PRB - N)



Sr. No.	NPT ② Male Pipe Size P	NPT ② Female Pipe Size P1	Ref. Part No.		L	ØE ①	Hex F
			SS 304	SS 316			
			PRB4	PRB6	Dimensions in Inches		
1	(1/4 x 18) x (1/8 x 27)		4PRB2Nx4	4PRB2Nx6	1.06	0.28	9/16
2	(3/8 x 18) x (1/8 x 27)		6PRB2Nx4	6PRB2Nx6	0.86	0.34	3/4
3	(3/8 x 18) x (1/4 x 18)		6PRB4Nx4	6PRB4Nx6	1.19	0.38	3/4
4	(1/2 x 14) x (1/8 x 27)		8PRB2Nx4	8PRB2Nx6	1.08	0.34	7/8
5	(1/2 x 14) x (1/4 x 18)		8PRB4Nx4	8PRB4Nx6	1.08	0.45	7/8
6	(1/2 x 14) x (3/8 x 18)		8PRB6Nx4	8PRB6Nx6	1.41	0.47	7/8
7	(3/4 x 14) x (1/4 x 18)		12PRB4Nx4	12PRB4Nx6	1.08	0.45	1.1/16
8	(3/4 x 14) x (3/8 x 18)		12PRB6Nx4	12PRB6Nx6	1.08	0.59	1.1/16
9	(3/4 x 14) x (1/2 x 14)		12PRB8Nx4	12PRB8Nx6	1.63	0.62	1.1/16
10	(1 x 11.5) x (1/4 x 18)		16PRB4Nx4	16PRB4Nx6	1.37	0.45	1.3/8
11	(1 x 11.5) x (3/8 x 18)		16PRB6Nx4	16PRB6Nx6	1.37	0.59	1.3/8
12	(1 x 11.5) x (1/2 x 14)		16PRB8Nx4	16PRB8Nx6	1.37	0.73	1.3/8
13	(1 x 11.5) x (3/4 x 14)		16PRB12Nx4	16PRB12Nx6	1.85	0.88	1.3/8

NOTE : ① The 'E' Dimension is the minimum opening.

② NPT thread as per ANSI B 1.20.1.

2.13 Pipe Fitting Part 1

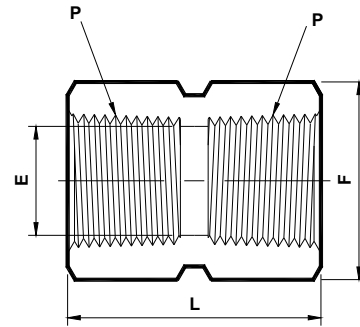
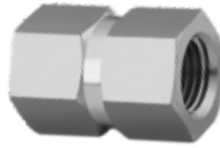
1/16"-2" NPT, 1/8"-1/2" BSP/ISO, SAE/MS

05. Hex Coupling

Material - **SS 304 | SS 316**

NPT (F) x NPT (F)

(N - PHC)



Sr. No.	NPT ② Female Pipe Size P	Ref. Part No.		L	ØE ①	Hex F
		SS 304	SS 316			
		NPHC4	NPHC6	Dimensions in Inches		
1	1/8 x 27	2NPHCx4	2NPHCx6	0.81	0.34	9/16
2	1/4 x 18	4NPHCx4	4NPHCx6	1.19	0.45	3/4
3	3/8 x 18	6NPHCx4	6NPHCx6	1.31	0.59	7/8
4	1/2 x 14	8NPHCx4	8NPHCx6	1.56	0.73	1.1/16
5	3/4 x 14	12NPHCx4	12NPHCx6	1.62	0.94	1.1/4
6	1 x 11.5	16NPHCx4	16NPHCx6	2.00	1.17	1.5/8

NOTE : ① The 'E' Dimension is the minimum opening.

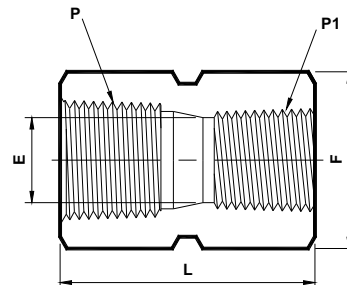
② NPT thread as per ANSI B 1.20.1.

06. Hex Reducing Coupling

Material - **SS 304 | SS 316**

NPT (F) x NPT (F)

(N - PHRC - N)



Sr. No.	NPT ② Female Pipe Size P	NPT ② Female Pipe Size P1	Ref. Part No.		L	ØE ①	Hex F
			SS 304	SS 316			
			PHRC4	PHRC6	Dimensions in Inches		
1	(3/8 x 18) x (1/4 x 18)		6PHRC4Nx4	6PHRC4Nx6	1.38	0.45	7/8
2	(1/2 x 14) x (1/8 x 27)		8PHRC2Nx4	8PHRC2Nx6	1.56	0.34	9/16
3	(1/2 x 14) x (1/4 x 18)		8PHRC4Nx4	8PHRC4Nx6	1.75	0.45	1.1/16
4	(1/2 x 14) x (3/8 x 18)		8PHRC6Nx4	8PHRC6Nx6	1.78	0.59	1.1/16
5	(3/4 x 14) x (1/2 x 14)		12PHRC8Nx4	12PHRC8Nx6	2.06	0.73	1.1/4
6	(1 x 11.5) x (1/2 x 14)		16PHRC8Nx4	16PHRC8Nx6	2.19	0.73	1.5/8
7	(1 x 11.5) x (3/4 x 14)		16PHRC12Nx4	16PHRC12Nx6	2.25	0.94	1.5/8

NOTE : ① The 'E' Dimension is the minimum opening.

② NPT thread as per ANSI B 1.20.1.